



ILLINOIS TOLLWAY NEWS

FOR IMMEDIATE RELEASE
August 25, 2023

Contact: Dan Rozek
630-241-6800 ext. 6392
drozek@getipass.com

LONG-TERM RAMP CLOSURE AND DETOUR SCHEDULED AT OGDEN AVENUE INTERCHANGE ON CENTRAL TRI-STATE TOLLWAY (I-294)

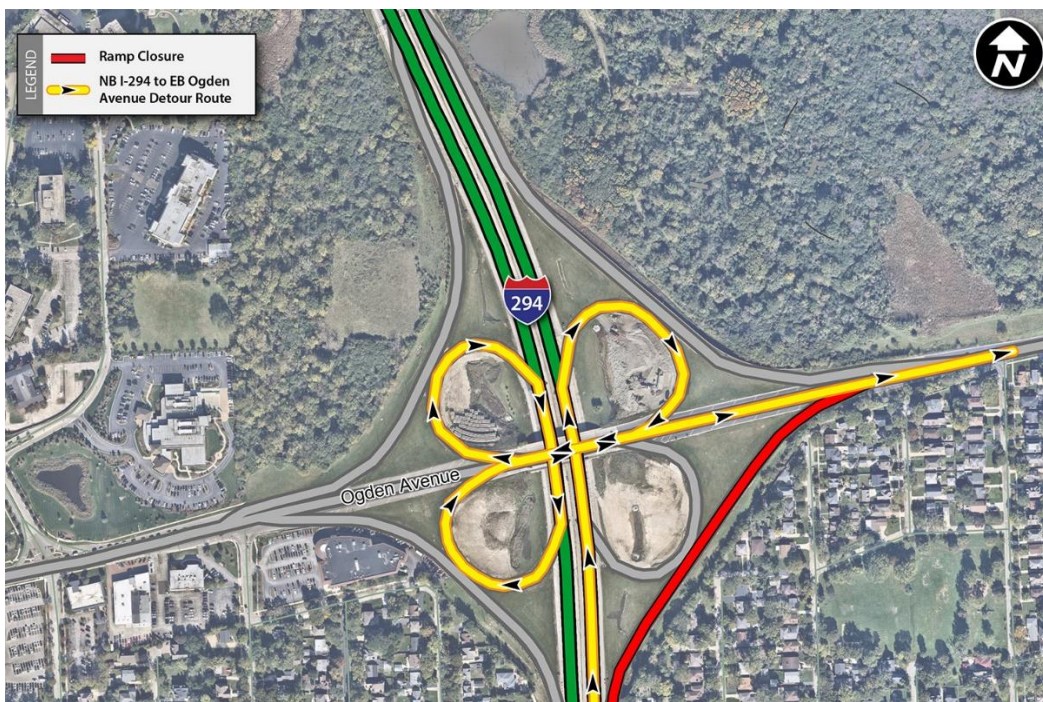
Ramp closure required to reconstruct the northbound I-294 ramp to Ogden Avenue

DOWNERS GROVE, IL – A long-term closure and detour are scheduled to begin in September on the ramp connecting the northbound Tri-State Tollway (I-294) to eastbound Ogden Avenue for reconstruction work as part of the Ogden Avenue Interchange Project. Advance work scheduled for next week will require overnight lane closures on I-294. Delays are expected.

Electronic message signs and construction signage will be put in place in advance to alert drivers to lane closures on I-294 and the ramp closure and detour. Up-to-date closure and detour information will be posted on the Tollway website and in the [Daily Construction Alert](#). All work is weather dependent.

During the week of August 28, up to three nights of overnight lane closures on northbound I-294 will be scheduled, with up to two lanes closed at a time for work to prepare for the ramp closure. Lane closures are scheduled to begin at 7 p.m. and all lanes are anticipated to reopen by 5 a.m. the following morning.

On Tuesday, September 5, at 8 p.m., the ramp connecting northbound I-294 to eastbound Ogden Avenue is scheduled to close through October. A detour will be posted routing traffic through the interchange to access eastbound Ogden Avenue.



-more-

Construction in this area is being coordinated with the Illinois Department of Transportation, Village of Hinsdale, Village of Oak Brook, Village of Western Springs, Cook County Department of Transportation, DuPage County Division of Transportation, Forest Preserves of Cook County, Oak Brook Park District, as well as local fire and police departments.

Information about the Ogden Avenue Interchange Project including maps and construction updates is available on the Tollway's website at www.illinoistollway.com in the Projects section.

The Illinois Tollway is investing \$8.9 million to reconfiguring the Ogden Avenue Interchange to improve mobility and traffic flow for local drivers and Tollway customers. Currently up to 40,000 vehicles use the interchange daily with up to 33,600 vehicles traveling on Ogden Avenue in the area

To accommodate the reconstruction and widening of the Central Tri-State Tollway, the Ogden Avenue Interchange will be reconfigured from a cloverleaf design to a partial cloverleaf design. The Illinois Tollway is combining ramps on the east side of I-294 to create one signalized access ramp from Ogden Avenue to northbound I-294 and the ramp connecting northbound I-294 to eastbound Ogden Avenue will be relocated with access control at the new traffic signal.

Improvements on Ogden Avenue will include repairs and median reconstruction on the existing bridge over I-294. In addition, on eastbound Ogden Avenue a new left turn lane will be constructed to provide access to northbound I-294 and the merge lane will be extended to provide vehicles exiting the Tollway with additional distance to merge. The project also includes noisewall construction, drainage and lighting improvements and landscaping.

The \$4 billion Central Tri-State Tollway (I-294) Project is reconstructing and widening the roadway between Balmoral Avenue and 95th Street to provide congestion relief, update old infrastructure to meet current and future transportation demand and address regional needs. This work is part of the Tollway's 15-year, \$14 billion capital program, *Move Illinois: The Illinois Tollway Driving the Future*. More than 220,000 vehicles use the Central Tri-State Tollway daily.

Work Zone Safety

Construction zone speed limits are in effect in all construction zones 24/7 and drivers should continue to watch for changing traffic patterns and use caution, especially when workers are present. On I-294, a 45 mph work zone speed limit is in effect throughout the construction season. On Ogden Avenue, a 35 mph work zone speed limit is in effect.

The Illinois Tollway reminds motorists that the "Move Over Law" requires motorists to change lanes or to slow down and proceed with caution when passing any vehicle on the side of the road with hazard lights activated. If you see flashing lights ahead, please move over or slow down.

Illinois State Police have zero tolerance for drivers speeding in work zones or failure to comply with the Move Over Law. The minimum penalty for speeding in a work zone is \$250 with up to a \$25,000 fine and a 14-year jail sentence for hitting a roadway worker. Penalties for failure to slow down or move over for a vehicle on the shoulder with flashing lights includes up to a \$10,000 fine, 2-year suspension of driving privileges and jail time, in extreme cases.

About Move Illinois

The Illinois Tollway's 15-year, \$14 billion capital program, *Move Illinois: The Illinois Tollway Driving the Future*, is improving mobility, relieving congestion, reducing pollution, creating as many as 152,000 jobs and linking economies throughout the region. The first 12 years of *Move Illinois* is on schedule and within budget, delivering the rebuilt and widened Jane Addams Memorial Tollway (I-90) as a state-of-the-art 21st century corridor and completing a new interchange connecting the Tri-State Tollway (I-294)

to I-57. Progress continues on projects addressing the remaining needs of the existing Tollway system, delivering the new I-490 Tollway and reconstruction of the Central Tri-State Tollway (I-294).

About the Illinois Tollway

The Illinois Tollway is a user-fee system that receives no state or federal funds for maintenance and operations. The agency maintains and operates 294 miles of roadways in 12 counties in Northern Illinois, including the Reagan Memorial Tollway (I-88), the Veterans Memorial Tollway (I-355), the Jane Addams Memorial Tollway (I-90), the Tri-State Tollway (I-94/I-294/I-80) and the Illinois Route 390 Tollway.

#